

Alphabets

Instructions

This resource includes the following:

1. **Multilingual alphabet lists** to be used by the teacher (pages 1-5)
2. **Poster exercise for the pupils** (pages 6-12)
3. **Flash cards exercise for the pupils** (pages 13-17)

1. Multilingual alphabet lists

23 letters common to all seven national languages

a	b	c	d	e	f	h	i	j
k	l	m	n	ñ	ŋ	o	p	r
		s	t	u	w	y		

14 special characters of the seven national languages

á	é	í	ó	ú	ɓ	ɗ
ɕ	ɔ	ɛ	ɣ	ë	ê	ɟ

Acknowledgements

This resource was the idea of **Abdoulie Salam Jallow**, Pulaar literacy facilitator with teaching experience: "I did not know where to find the alphabets for the national languages and I had never been told which letters the languages share so this is why I developed this resource. It can be useful for literacy lessons."

Design by **Anda Drasovean**, instructional designer.

Illustration sources: freepik.com, colorhunt.co

1.1 Kuloolu (Mandinka alphabet)

<p>Alphabet</p> <p>a b c d e f h i j k l m n ñ ŋ o p r s t u w y</p>
<p>Diagraphs</p> <p>mb mf mp nc nd nj nk ns nt ny ññ</p>
<p>Long vowels</p> <p>aa ee ii oo uu</p>
<p>Double consonants</p> <p>ll mm nn</p>

Notes about the Mandinka alphabet

ì and ç are sometimes used to indicate the plural of certain pronouns.

à is used in the word or àŋ which means we.

Some varieties of Mandinka spoken in The Gambia also use the letter sound g.

1.2 Siciikaas sati kujamutaak (Jola alphabet)

<p>Alphabet</p> <p>a <u>á</u> b c d e <u>é</u> f g h i <u>í</u> j k l m n ñ ŋ o <u>ó</u> p r s t u <u>ú</u> w y</p>
<p>Diagraphs</p> <p>mb mp nc nd nf ng nh nj nk nl nt ns nr nw ny</p>
<p>Long vowels</p> <p>aa ee ii oo uu áa ée íi óo úu</p>
<p>Double consonants</p> <p>mm nn ññ ŋŋ</p>

Notes about the Jola alphabet

The following letters can be used interchangeably: **w** and **y**, **j** and **g**, **r** and **d**, **c** and **k**.

An acute accent over a vowel (e.g. **á**) indicates that it is pronounced with an advanced tongue root.

The apostrophe (') is used to represent a glottal stop.

1.3 Alphabet (Seereer alphabet)

<p>Alphabet</p> <p>a b <u>b</u> <u>ɓ</u> c <u>ɗ</u> d <u>ɗ</u> e f g h i j k l m n ŋ ñ o p q r s t <u>f</u> u w x y <u>y</u></p>
<p>Diagraphs</p> <p>md nd ng nj nq</p>
<p>Long vowels</p> <p>aa ee ii oo uu</p>
<p>Double consonants</p> <p>araf ke naa siid/daa</p>

1.4 Araf yi (Olof alphabet)

<p>Alphabet</p> <p>a b c d e é <u>ë</u> f g h x i j k l m n ñ ŋ o <u>ó</u> p r s t u w y</p>
<p>Diagraphs</p> <p>mb nd ng nj nc nk nh (nx)</p>
<p>Long vowels</p> <p>aa ee éé ii oo óó uu</p>
<p>Double consonants</p> <p>bb dd gg hh (xx) jj kk mm ñn yy pp</p>

Notes about the Olof alphabet

The following letters can be used interchangeably: h and x

1.5 Sigiru (Sarahule alphabet)

<p>Alphabet</p> <p>a b c d e f g h i j k l m n ñ ŋ o p q r s t u w x y</p>
<p>Diagraphs</p> <p>nb nc nd nf ng nj nk nl nm nñ ny np ns nt nx</p>
<p>Long vowels</p> <p>aa ee ii oo uu</p>
<p>Double consonants</p> <p>bb dd jj kk ll mm nn pp tt xx</p>

1.6 Ngëwab (Manjaku alphabet)

<p>Alphabet</p> <p>a b c d e <u>ë</u> f g h i j k l m n ñ ŋ o p r s <u>ŝ</u> t <u>t</u> u w y z</p>
<p>Diagraphs</p> <p>mb nd ng nj mp ntw nt</p>
<p>Long vowels</p> <p>aa ee ii oo uu</p>
<p>Double consonants</p> <p>mm</p>

1.7 Alkule limto pulaar (Pulaar alphabet)

Alphabet

a b b c d d e f g h i j k l m n ñ ŋ
o p r s t u w y y

Diagraphs

mb nd ng nj

Long vowels

aa ee ii oo uu

Double consonants

bb cc dd dɗ gg jj kk ll mm nn ññ ŋŋ pp tt ɓɓ ss

Notes about the Pulaar alphabet

The apostrophe ' is used to represent a glottal stop in the middle of a word only, e.g. go'o (one), na'i (cows), yi'a (to see).

Mandinka

a b c d e

f h i j k

l m n ñ ñ

o p r s t

u w y



$2+2=4$

$2+2=4$

Jola

a á b c d

e é f g h

i í j k l

m n ñ ñ o

ó p r s t

u ú v w y



Seereer

a b b ß c

c d d e f

g h i j k l

m n n ñ o

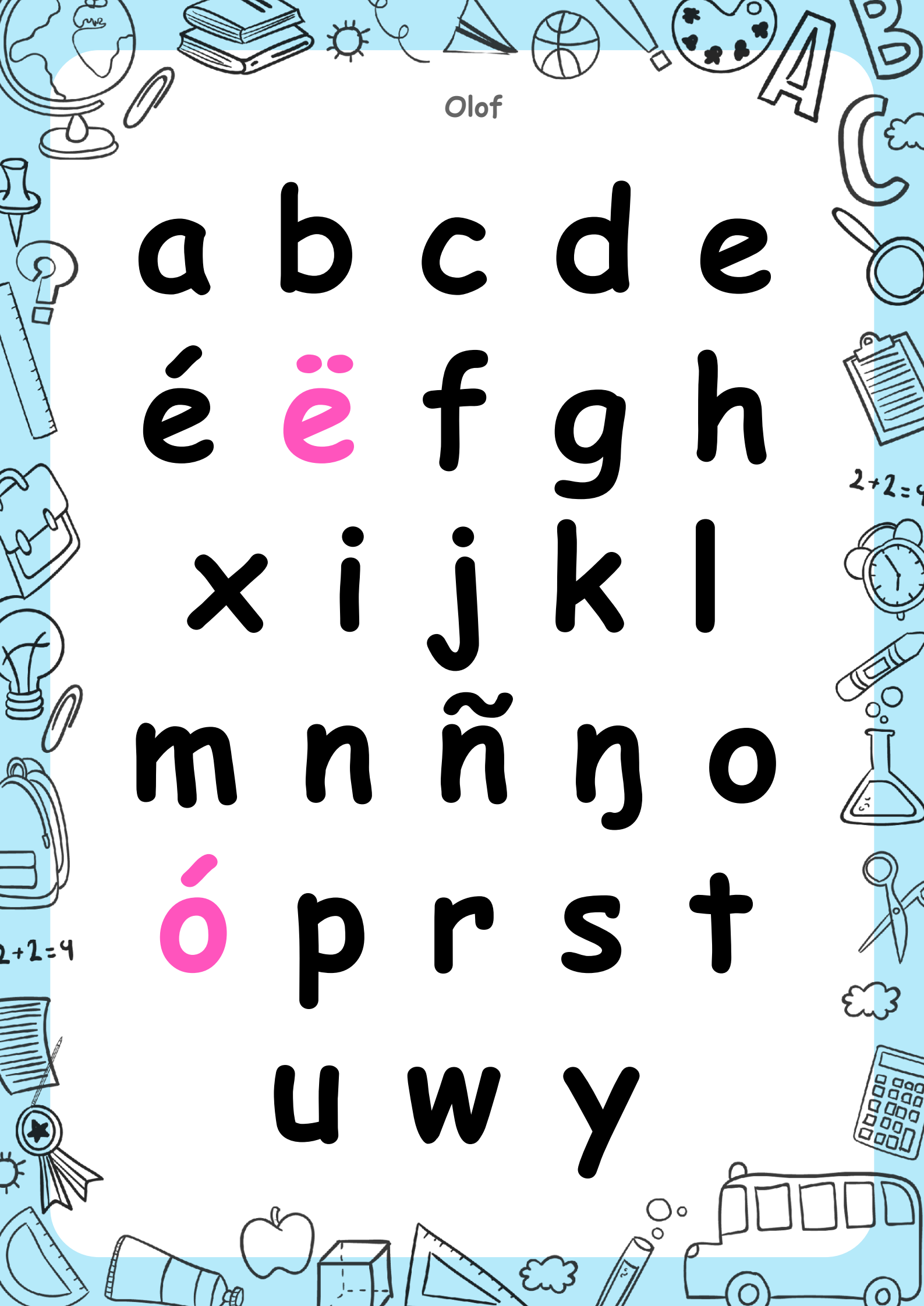
p q r s t t

u w x y y

2+2=4

2+2=4





Olof

a b c d e

é ë f g h

x i j k l

m n ñ ñ o

ó p r s t

u w y

2+2=4

2+2=4



Sarahule

a b c d e

f g h i j k

l m n ñ ò

o p q r s t

u v w x y



2+2=4

2+2=4

a b c d e

ë f g h i

j k l m n

ñ ñ o p r

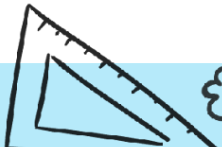
s s t t u

w y z

2+2=4



2+2=4



Pulaar

a b **b** c d

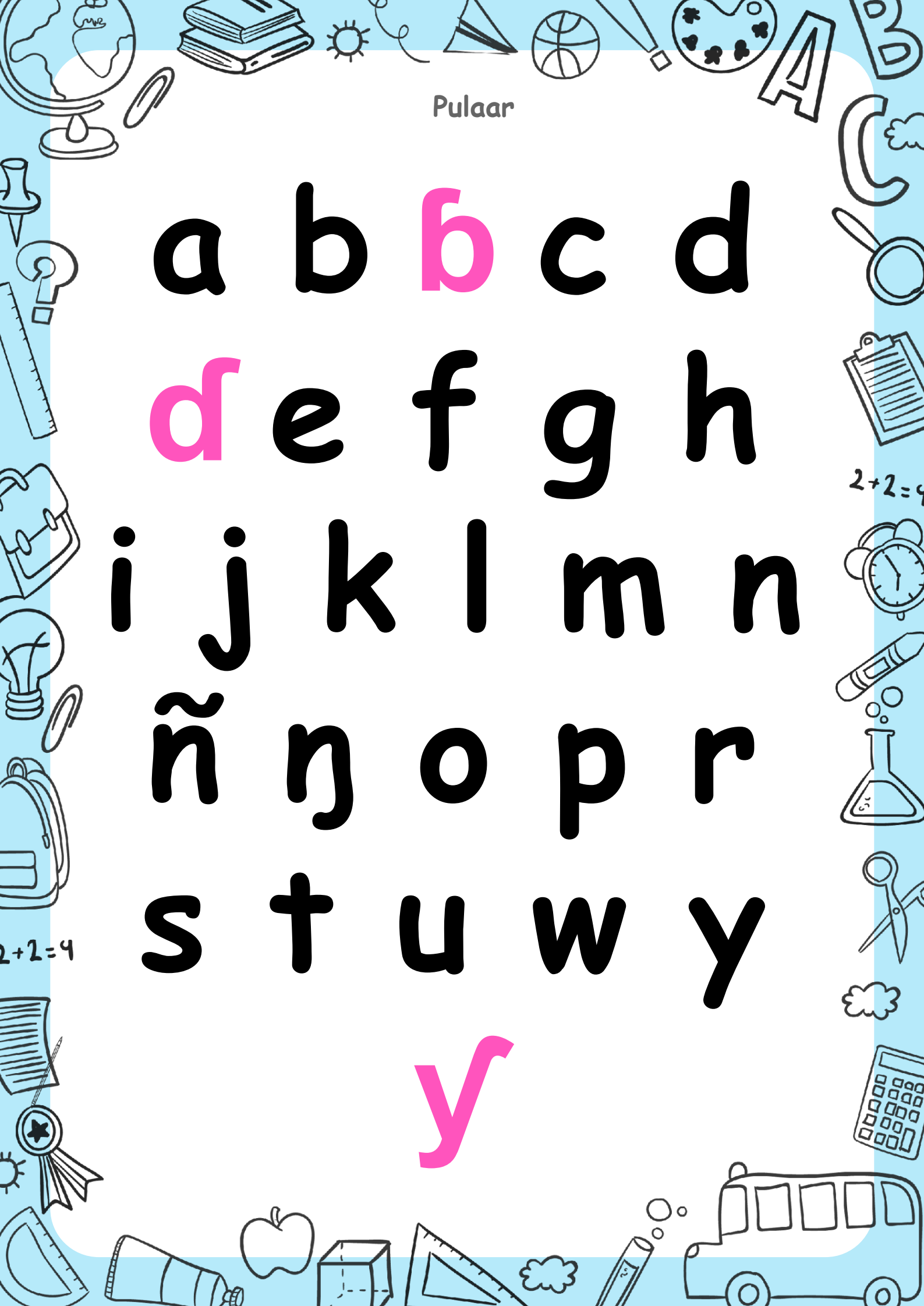
d e f g h

i j k l m n

ñ ŋ o p r

s t u w y

y



Alphabet

(letters common to all national languages)



a



b



c



d



e



f



h



i



j



k



l



m



n



o



o



p



r



s



t



u



w



y

Alphabet

(the 14 special characters of the seven national languages)



á



é



ë



ó



ú



í



b



c



d



f



y



b



s



t